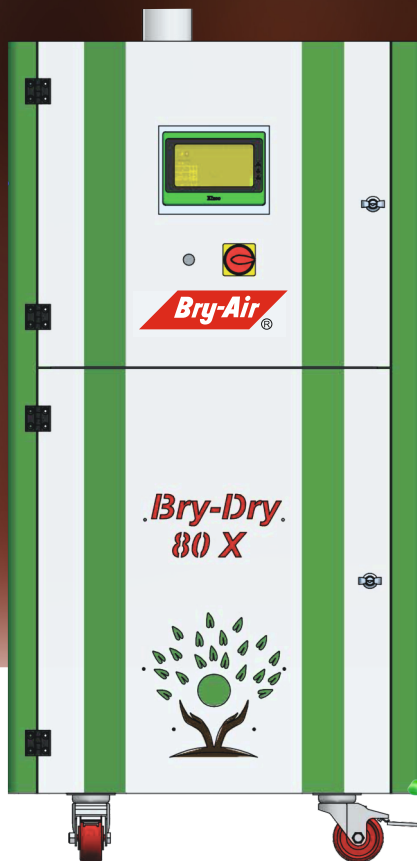


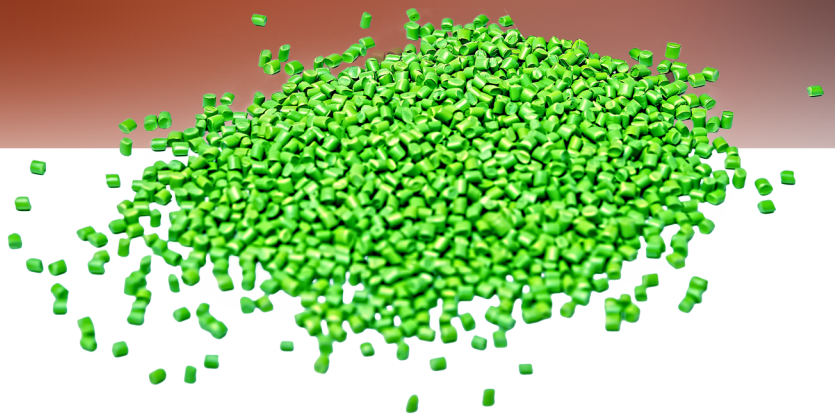
REAL WATERLESS
**PLASTIC
DRYER**

Bry-Air Knows Drying Best



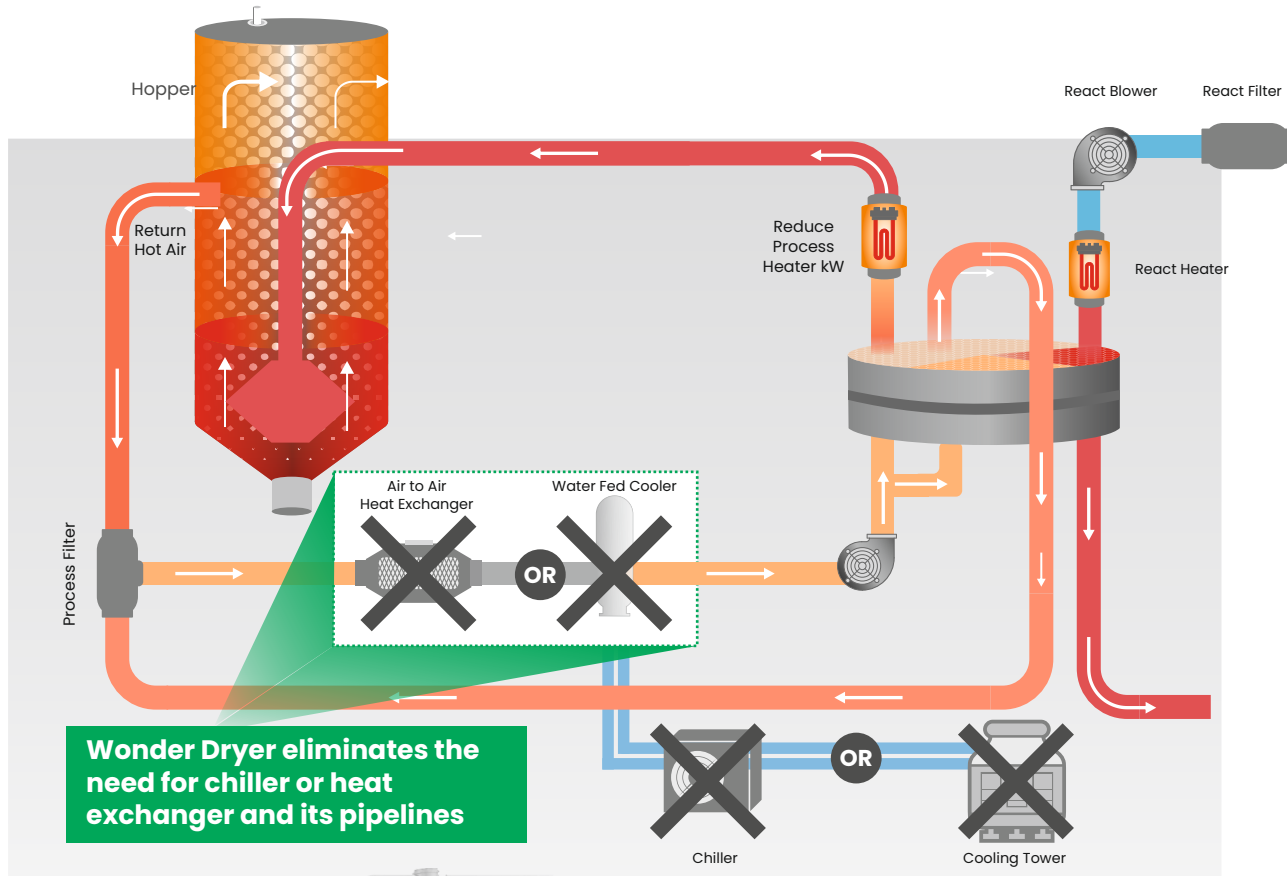
Wonder Dryer

Bry-Dry 80X Series

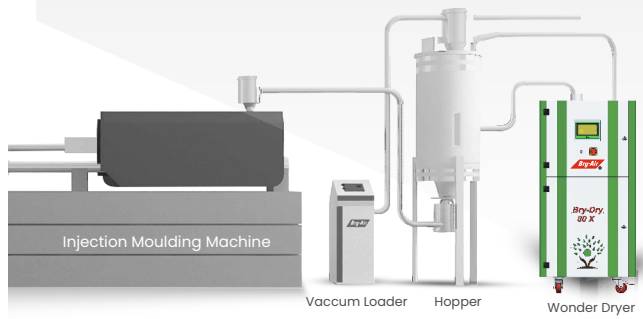


Wonder Dryer

Wonder Dryer from Bry-Air is the energy efficient revolutionary plastic dryer which is **waterless** in the truest sense. It is launched specifically to cater to the drying needs of next generation plastic materials. This dryer is able to deliver $< (-) 40^{\circ}\text{C}$ dew point even at 80°C return air to desiccant rotor inlet.



Wonder Dryer eliminates the need for chiller or heat exchanger and its pipelines



Resin Drying Type, Temperature and Time*

| Resin Type | PET | PBT | PPO | PLL/PSU | PC | ABS | PA6/6 | PMMA/SAN |
|------------|---------|---------|--------|---------|-----|-------|-------|-----------|
| Temp. (°C) | 160-180 | 120-135 | 90-110 | 90-100 | 120 | 80-85 | 70-90 | 80 |
| Time (hr) | 4-5 | 3-4 | 2-3 | 3-4 | 3-4 | 2-3 | 5-6 | 3-4 / 2-3 |

* Drying rates are based on $(-)40^{\circ}\text{C}$ dew point.

Advantage Wonder Dryer



Energy Efficient



Hassle Free Operations



Faster ROI

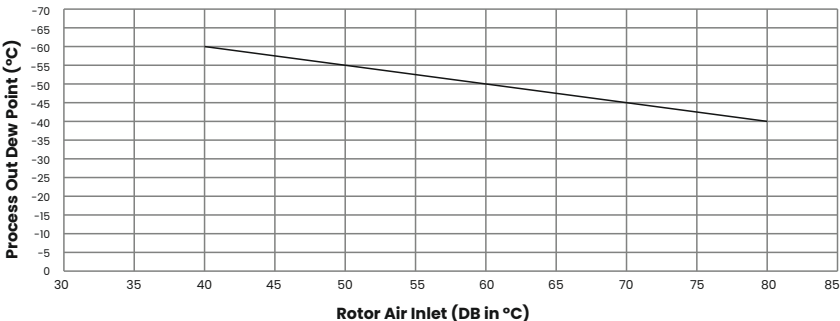


Improved Performance



Portable

Bry-Dry 80X Series Dew Point Performance Curve



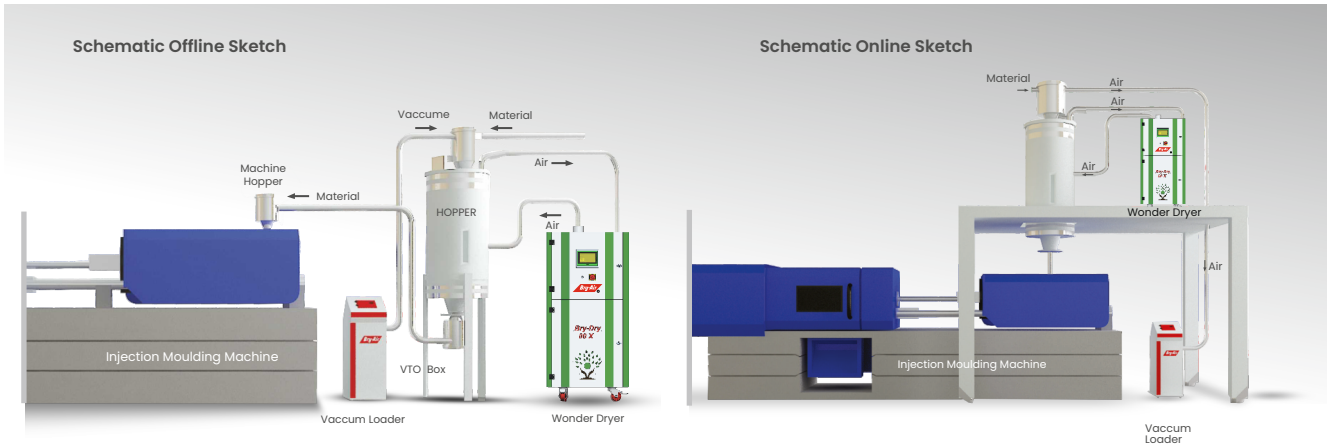
Rotor test at following conditions

| | |
|---------|-------------|
| DB R-in | 200 °C |
| w R-in | 140 gr/lb |
| w P-in | ≤ 9.2 gr/lb |

— Bry-Dry 80X

| | |
|---------|----------------------------------|
| DB R-in | - React inlet temperature |
| w R-in | - Ambient moisture content |
| w P-in | - Process inlet moisture content |

Installation Options



Technical Specification for Wonder Dryer

| MODEL | Process Air Inflow (CMH) | Hose Connection (in) | Outlet Temp. Range (°C) | Process Blower (kW) | React Blower (kW) | Bed Drive Motor (kW) | Process Heater (kW) | | React Heater(kW) | | P OUT Dew Point (°C) | Dimensions (mm) | | | Full Load (amp) | Shipping Weight (kg) |
|--------------|--------------------------|----------------------|-------------------------|---------------------|-------------------|----------------------|---------------------|-----------|------------------|---------|----------------------|-----------------|------|------|-----------------|----------------------|
| | | | | | | | For 120°C | For 180°C | Connect | Running | | W | D | H | | |
| *Bry-Dry-30 | 30 | 2 | 80-180 | 0.18 | 0.18 | 0.006 | 0.75 | 1.25 | 1.5 | 0.6 | -40 | 560 | 660 | 1500 | 16 | 175 |
| *Bry-Dry-60 | 60 | 2 | 80-180 | 0.40 | 0.18 | 0.006 | 1.25 | 2.50 | 1.5 | 1.1 | -40 | 560 | 660 | 1500 | 22 | 185 |
| Bry-Dry-120 | 120 | 3 | 80-180 | 0.90 | 0.40 | 0.006 | 2.25 | 5.0 | 2.75 | 2.3 | -40 | 830 | 950 | 1745 | 14 | 340 |
| Bry-Dry-170 | 170 | 4 | 80-180 | 1.75 | 0.40 | 0.006 | 3.25 | 7.0 | 3.75 | 3.2 | -40 | 830 | 950 | 1745 | 20 | 350 |
| Bry-Dry-225 | 225 | 4 | 80-180 | 2.20 | 0.40 | 0.006 | 4.25 | 9.0 | 5.0 | 4.3 | -40 | 830 | 950 | 1745 | 26 | 360 |
| Bry-Dry-300 | 300 | 4 | 80-180 | 5.50 | 0.75 | 0.025 | 5.75 | 12.0 | 6.75 | 5.7 | -40 | 830 | 950 | 1745 | 40 | 420 |
| Bry-Dry-400 | 400 | 6 | 80-180 | 5.50 | 0.90 | 0.025 | 7.50 | 16.0 | 9.0 | 7.6 | -40 | 1090 | 1320 | 1920 | 48 | 570 |
| Bry-Dry-500 | 500 | 6 | 80-180 | 9.00 | 1.75 | 0.025 | 9.0 | 20.3 | 11.25 | 9.5 | -40 | 1090 | 1320 | 1920 | 66 | 600 |
| Bry-Dry-750 | 750 | 6 | 80-180 | 9.00 | 2.20 | 0.025 | 13.5 | 30.0 | 18.0 | 14.3 | -40 | 1090 | 1320 | 1920 | 89 | 635 |
| Bry-Dry-1000 | 1000 | 6 | 80-180 | 5.60 | 0.75 | 0.025 | 20.0 | 40.0 | 22.5 | 19.1 | -40 | 1645 | 1945 | 2180 | 95 | 885 |
| Bry-Dry-1250 | 1250 | 10 | 80-180 | 5.60 | 1.12 | 0.025 | 25.0 | 50.0 | 27.5 | 23.9 | -40 | 1645 | 1945 | 2180 | 129 | 895 |
| Bry-Dry-1750 | 1750 | 10 | 80-180 | 7.50 | 1.12 | 0.025 | 33.0 | 69.4 | 38.5 | 33.4 | -40 | 1645 | 1945 | 2180 | 164 | 910 |
| Bry-Dry-2500 | 2500 | 10 | 80-180 | 9.30 | 1.50 | 0.040 | 46.2 | 99.0 | 59.4 | 47.7 | -40 | - | - | - | - | - |
| Bry-Dry-3500 | 3500 | 10 | 80-180 | 15.00 | 2.20 | 0.040 | 66.3 | 138.9 | 79.2 | 66.8 | -40 | - | - | - | - | - |

* Indicates unit available in 230/1/50Hz only

DRYING – At The Heart Of It All

Bry-Air, a leader in Plastics Drying in India and North America since 1979, has been on the forefront of providing the latest and most advanced drying solutions to the plastics processing industry.

Our accumulated experience of over half a century in the plastics industry enables us to provide plastic dryers and other ancillary equipments to meet the exact needs of today's plastics processors. Bry-Air's experience in the industry is job proven. Bry-Air, a flagship company of the Pahwa Group, has:



13
Manufacturing
Facilities



9
R & D Labs



Installations
in over **80** Countries



Representatives
in Over **60** Countries



15
New
Technologies



141
International Patent
Application Filed



73
Patents
Granted/Allowed



1500+
Employees

Bry-Air Range of Plastic Dryers



Wonder Dryer



Mould
Dehumidification System



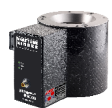
Auto Loader



Hot Air Dryer



Nano Dryer



Moisture Minder



Leaders in Dehumidification... Worldwide

Corporate Office:
21C, Sector-18, Gurugram 122015
Phone: +91-124-4091111
Fax: +91-124-4091100
E-mail: bryairmarketing@pahwa.com

Registered Office:
20, Rajpur Road, Delhi 110054
Phone: +91-11-23906666
Fax: +91-11-23906600
E-mail: enquire@pahwa.com
Web: www.bryair.com
CIN: U74210DL1981PTC012456

| City | Phone |
|------------|--------------------------|
| DELHI | +91-11-23906666 |
| CHANDIGARH | +91-172-4678806/7 |
| MUMBAI | +91-22-24935155/24947475 |
| VADODARA | +91-265-2351493 |
| KOLKATA | +91-33-22814841/22814877 |
| BENGALURU | +91-80-43025562/3/4/5 |
| HYDERABAD | +91-40-27154243 |
| CHENNAI | +91-44-48606141/2/3 |
| KOCHI | +91-484-2385940 |

| E-mail |
|----------------------------|
| enquire@pahwa.com |
| bryairchandigarh@pahwa.com |
| bryairmumbai@pahwa.com |
| bryairbaroda@pahwa.com |
| bryairkolkata@pahwa.com |
| bryairbangalore@pahwa.com |
| bryairhyderabad@pahwa.com |
| bryairchennai@pahwa.com |
| bryairkochi@pahwa.com |

| BRY-AIR (USA) |
|-----------------------------|
| Phone: +1-740-965-2974 |
| Fax: +1-740-965-5470 |
| E-mail: bryair1@bry-air.com |
| Website: www.bry-air.com |

| BRY-AIR (CHINA) |
|----------------------------|
| Phone: +86-21-34126537 |
| E-mail: info@bryair.com.cn |
| Website: www.bryair.com.cn |

| BRY-AIR (MALAYSIA) |
|------------------------------|
| Phone: +60-3-89256622 |
| Fax: +60-3-89259957 |
| E-mail: bryair@bryair.com.my |
| Website: www.bryair.com.my |

| BRY-AIR (BRAZIL) |
|-------------------------------|
| Phone: +55-41-36982222 |
| E-mail: contato@bryair.com.br |
| Website: www.bryair.com.br |

| Country | Phone | E-mail | Website |
|-----------------------|--------------------|-----------------------------|---------------------------|
| BRY-AIR (UAE) | +971-6-5574622 | support@bryair.ae | www.bryair.com/uae |
| BRY-AIR (PHILIPPINES) | +63-2-88078435/6/7 | mail@bryair.com.ph | www.bryair.com/malaysia |
| BRY-AIR (INDONESIA) | +62-21-79199023 | indomark@bryair.com.my | www.bryair.com/malaysia |
| BRY-AIR (THAILAND) | +66-21-17-9558 | wimonvanvaree@pahwa.com | www.bryair.com/malaysia |
| BRY-AIR (VIETNAM) | +84-28-39956498 | vietmarketing@bryair.com.my | www.bryair.com/myvietnam |
| BRY-AIR (NIGERIA) | +234-8097276772 | bryairnigeria@pahwa.com | www.bryair.com/nigeria |
| BRY-AIR (SWITZERLAND) | +41-91-6830971 | info@pro-kon.ch | www.bryairprokon.com |
| BRY-AIR (BANGLADESH) | +880-1819409100 | bryairbangladesh@pahwa.com | www.bryair.com/bangladesh |