



TECHNICAL SPECIFICATION

Bulletin	: BAA:BRY DRY-932.0
Effective	: DEC 01, 2023
Supersedes	:
Dated	:

BRY-AIR (ASIA) PVT. LTD.

20, RAJPUR ROAD, DELHI - 110054 (INDIA)
 PHONE : 91-11-23906666 FAX: 91-11-23906600
 E-mail: enquire@pahwa.com. Website:www.bryair.com

PLASTIC DRYING SYSTEMS

BRY DRY 80X SERIES

WONDER DRYER SERIES WATER LESS PLASTIC DRYER

BRY DRY-SERIES CABINET-STYLE DEHUMIDIFYING DRYERS
ALL BRY DRY-SERIES FLOOR-MOUNT CABINET-STYLE DRYERS COME STANDARD WITH :

- | | |
|--|--|
| <p>HIGH EFFICIENCY AND RELIABIILITY</p> <ul style="list-style-type: none"> ◆ A totally self contained unit. ◆ Robust structural steel frame construction. ◆ CNC fabricated unit(s) with powder coated finish ◆ Process air high temperature paper filter. ◆ Water less plastic dryer, can achieve ≤ -40°C at rotor inlet air condition ≤ 80°C. ◆ Rotor incorporates robust internal structure for industries quality and durability. ◆ Rotor is non-flammable with organic < 2%. ◆ Hard face coating on rotor edge ensures long life and good sealing for media and seals. ◆ Process and reactivation air flow sectors are insulated. ◆ Unique PTFE coated silicone flat seal. <p>EASY TO INSTALL</p> <ul style="list-style-type: none"> ◆ Castor wheel mounted cabinet for easy movement. ◆ Versatile, easy to package and handle. ◆ Small footprints; low volume/weight per CMH. ◆ No need to connect any Chiller load. | <p>EASY TO OPERATE</p> <ul style="list-style-type: none"> ◆ Isolated and protected 24V Dc Relay driver output. ◆ Three wire RTD PT-100 inputs with wire resistance compensation. ◆ 4 to 20 mA input , with polarity and fault protection against direct voltage input upto 36V DC. ◆ Isolated 4-20mA output suitable to drive external load > 800 Ohm ◆ Isolated RS485 port with MODBUS RTU slave Protocol. ◆ MODBUS TCP/IP (Optional web server or Cloud connectivity) ◆ 24VDC / 1 Amp max , Protected and filtered ◆ 0 to 55 Deg C and RH up to 95% non Condensing. <p>OPTIONS</p> <ul style="list-style-type: none"> ◆ Digital Dew Point Meter ◆ Remote Access on Mobile/Tab/Laptop ◆ 7" Colour Touch Panel |
|--|--|

SPECIFICATION SHEET FOR BRY DRY - SERIES DRYERS

MODEL	PROCESS AIR FLOW CMH	HOSE CONNECTION IN "	OUTLET TEMP. RANGE IN °C	PROCESS BLOWER KW	REACT BLOWER KW	BED DRIVE MOTOR KW	PROCESS HEATER KW		REACT HEATER KW		P OUT DEW POINT °C	DIMENSIONS IN MM			FULL LOAD AMP.	SHIPPING WEIGHT KG
							For 120°C	For 180°C	Connect	Running		W	D	H		
*BRY DRY-60	60	2	80-180	0.40	0.18	0.006	1.25	2.5	1.5	1.1	-40	560	660	1500	22	185
BRY DRY-120	120	3	80-180	0.90	0.40	0.006	2.25	5.0	2.75	2.3	-40	830	950	1745	14	340
BRY DRY-170	170	4	80-180	1.75	0.40	0.006	3.25	7.0	3.75	3.2	-40	830	950	1745	20	350
BRY DRY-225	225	4	80-180	2.20	0.40	0.006	4.25	9.0	5.0	4.3	-40	830	950	1745	26	360
BRY DRY-300	300	4	80-180	5.50	0.75	0.025	5.75	12.0	6.75	5.7	-40	830	950	1745	40	420
BRY DRY-400	400	6	80-180	5.50	0.90	0.025	7.50	16.0	9.0	7.6	-40	1090	1320	1920	48	570
BRY DRY-500	500	6	80-180	9.00	1.75	0.025	9.0	20.3	11.25	9.5	-40	1090	1320	1920	66	600
BRY DRY-750	750	6	80-180	9.00	2.20	0.025	13.5	30.0	18.0	14.3	-40	1090	1320	1920	89	635
BRY DRY-1000	1000	6	80-180	5.60	0.75	0.025	20.0	40.0	22.5	19.1	-40	1645	1945	2180	95	885
BRY DRY-1250	1250	10	80-180	5.60	1.12	0.025	25.0	50.0	27.5	23.9	-40	1645	1945	2180	129	895
BRY DRY-1750	1750	10	80-180	7.50	1.12	0.025	33.0	69.4	38.5	33.4	-40	1645	1945	2180	164	910
BRY DRY-2500	2500	10	80-180	9.30	1.50	0.040	46.2	99.0	59.4	47.7	-40	-	-	-	-	-
BRY DRY-3500	3500	10	80-180	15.00	2.20	0.040	66.3	138.9	79.2	66.8	-40	-	-	-	-	-

* Indicates unit available in 230/1/50Hz only

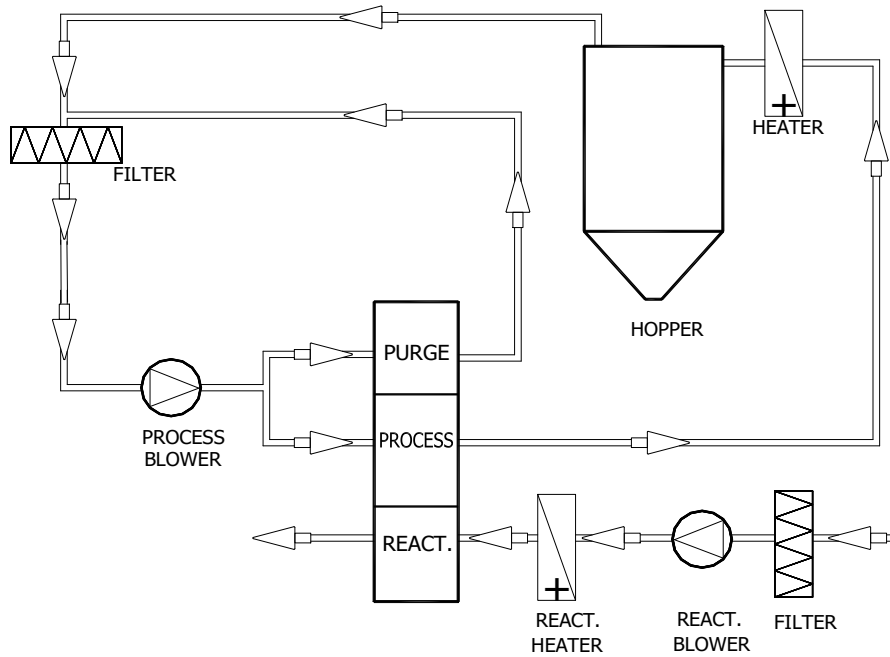
ALL DATA SUBJECT TO CHANGE WITHOUT NOTICE

Documents No. :BAA:BRY DRY-932.0

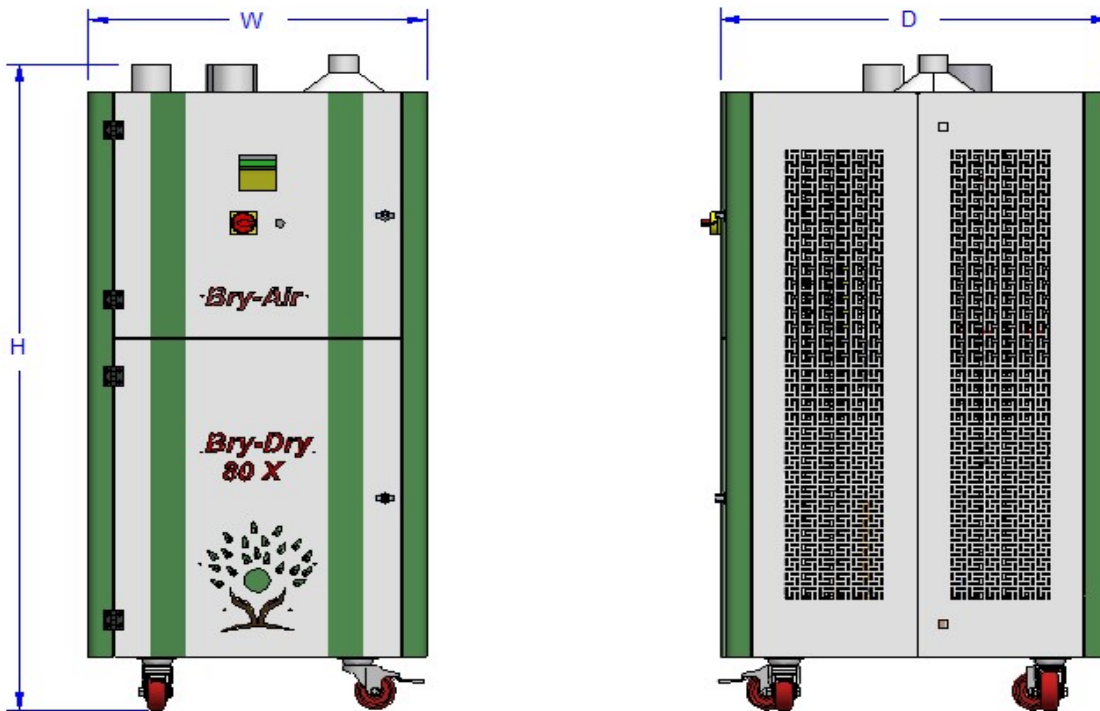
Date : Dec. 01, 2023



SYSTEM FLOW



UNIT LAYOUT



ALL DATA SUBJECT TO CHANGE WITHOUT NOTICE

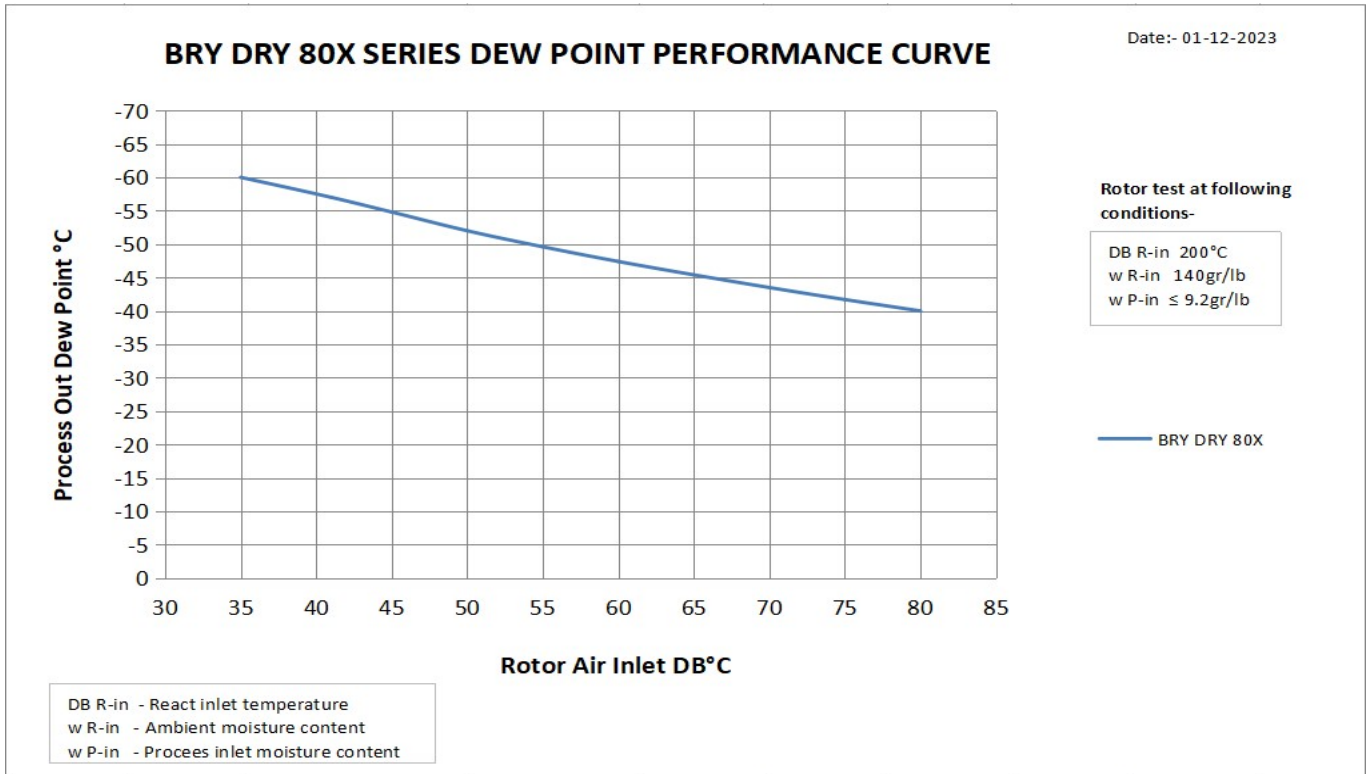
Documents No. :BAA:BRY DRY-932.0

Date : Dec. 01, 2023



AVAILABLE OPTIONS

DESCRIPTION	AVAILABILITY														
	BRY DRY-30	BRY DRY-60	BRY DRY-120	BRY DRY-170	BRY DRY-225	BRY DRY-300	BRY DRY-400	BRY DRY-500	BRY DRY-750	BRY DRY-1000	BRY DRY-1250	BRY DRY-1750	BRY DRY-2500	BRY DRY-3500	
Touch Screen / PLC / Module	←							AVAILABLE	→						
Material Level Sensor	←							AVAILABLE	→						
Dew Point Assy	←							AVAILABLE	→						
MAterial Saver Function	←							AVAILABLE	→						
7 Day Timer	←							AVAILABLE	→						
Silicon Flexible For High Heat Application	←							AVAILABLE	→						

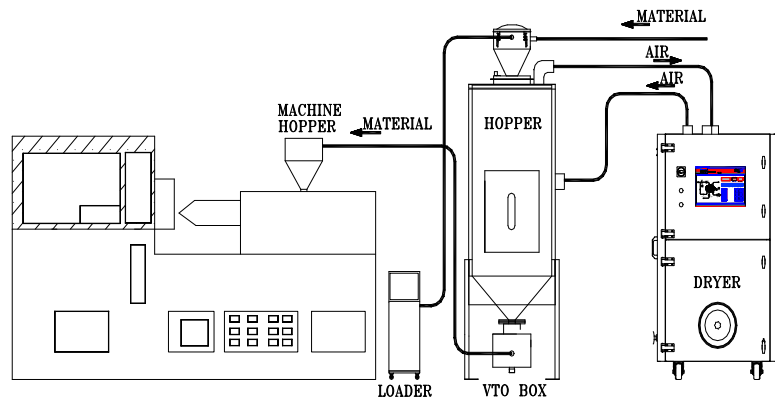


DRYING RATES (Kg / Hr)

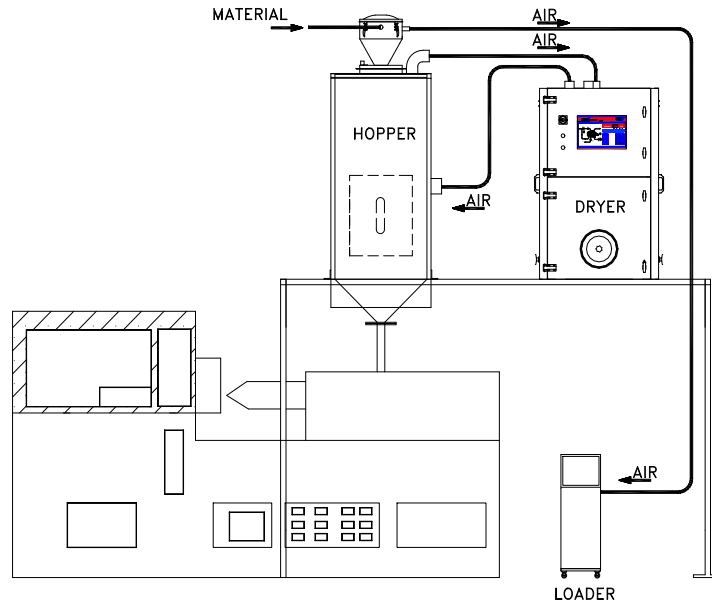
RESIN TYPE	DRYING TEMP °C	TIME Hours	DRYING RATES (Kg / Hr)													
			BRY DRY-30	BRY DRY-60	BRY DRY-120	BRY DRY-170	BRY DRY-225	BRY DRY-300	BRY DRY-400	BRY DRY-500	BRY DRY-750	BRY DRY-1000	BRY DRY-1250	BRY DRY-1750	BRY DRY-2500	BRY DRY-3500
ABS	80-85	2-3	17	34	68	97	128	171	229	286	429	571	714	1000	1430	2000
PA6/6	70-90	5-6	12	24	48	68	90	120	160	200	300	400	500	700	1000	1400
PC	120	3-4	16	33	67	94	125	167	222	278	417	556	694	972	1390	1950
PET	160-180	4-5	13	27	53	76	100	133	178	222	333	444	556	778	1111	1556
PMMA	80	3-4	13	26	52	74	98	130	173	217	326	434	543	760	1086	1520
PPO	90-110	2-3	15	30	60	85	113	150	200	250	375	500	625	875	1250	1750
SAN	80	2-3	16	32	64	91	121	162	216	270	405	540	675	945	1351	1890
PBT	120-135	3-4	15	30	60	85	113	150	200	250	375	500	625	875	1250	1750
PLL/PSU	90-100	3-4	16	32	64	91	121	162	216	270	405	540	675	945	1351	1890

Note - As mentioned above, drying rates are based on -40°C dewpoint. For improved drying rate at reduced dewpoint, please consult BAA factory.

SCHEMATIC OFFLINE SKETCH



SCHEMATIC ONLINE SKETCH



ALL DATA SUBJECT TO CHANGE WITHOUT NOTICE

Documents No. :BAA:BRY DRY-932.0

Date : Dec. 01, 2023

