



# TECHNICAL DATA SHEET

Bulletin : BAA: D0004\_16  
 Effective : April,10,2021  
 Supercedes : BAA: D0004\_15  
 : August,05,2020

## BRY-AIR (ASIA) PVT. LTD.

20, Rajpur Road, Delhi 110054  
 PHONE : 91-11-23906666 FAX: 91-11-23906600  
 E-MAIL: enquire@pahwa.com, Web site: www.bryair.com

# COMPACT DEHUMIDIFIER FLUTED FLAT BED - FFB SERIES

FFB WITH HIGH PERFORMANCE, **ECG** METAL SILICATE FLUTED  
DESICCANT SYNTHESISED ROTOR

### FEATURE HIGHLIGHTS

- High efficiency and reliability**
  - \* **CE** Certified as per standard EN 60204-1:2018/IEC 60204-1:2016, EN ISO 12100:2010, IEC 60335-2-40:2018, EN 61000-6-2:2019, EN 61000-6-4:2019, EN 55011:2016, IEC 61000-4-2:2008, IEC 61000-4-4:2012, IEC 61000-4-5: 2014 + AMD1:2017, IEC 61000-4-6:2013,
  - \* Low Voltage Directive (2014/35/EU) Machinery Directive (2006/42/EC) & EMC Directive (2014/30/EU)
  - \* A totally self contained unit
  - \* CNC fabricated unit(s) with powder coated finish
  - \* Rotor media has high performance metal silicates synthesized in situ.
  - \* Rotor incorporates robust internal structure with stainless steel perimeter flange for industrial quality, durability and easy serviceability.
  - \* Rotor perimeter flange extends media and seal life
  - \* Edge hard face coating on rotor ensures long life and good sealing for media and seals.
  - \* Rotor is non-flammable with organics < 2%.
  - \* Process and reactivation air flow sectors are insulated
- Necessary control and safeties**
  - \* Micro processor controller
  - \* MODBUS Communication via RS 485 Serial
  - \* Remote start /stop option
  - \* Auto / manual mode selection
  - \* Independent differential air pressure switch for providing react air flow
  - \* Independent reactivation cool down safety device.
  - \* Electrical interlocking of fan motors, heaters and rotor drive.
  - \* Unique PTFE bonded bulb seal design; minimized air leakage
- Easy to operate**
  - \* Suitable for continuous operation
  - \* Independent blower and motor for each airflow (Process & Reactivation)
  - \* Volume control damper for both (Process & Reactivation) air flow
- Easy to install**
  - \* Several mounting and installation options
  - \* Small footprints; low volume/weight per CMH.
- Easy to maintain**
  - \* Quick and easy to service
  - \* Rotor is water washable
- Options**
  - \* Humidity control through humidistat on/off
  - \* Stainless steel construction
  - \* Add on Pre/Post coil box

### COMPACT DEHUMIDIFIER - FFB... SPECIFICATION

MODEL	PROCESS AIR FLOW CMH	PROCESS ESP (Pa.)	PROCESS MOTOR KW	REACT. AIR FLOW CMH	REACT. ESP (Pa.)	REACT. MOTOR KW	REACT. HEATER KW	POWER * REQD. (v/Ø/Hz.)	APPROX. WEIGHT Kg.
FEB170	170	120	0.1	57	100	0.1	2.3	230 /1/ 50	66
FEB300	300	200	0.1	100	100	0.1	3.6	230 /1/ 50	74
FEB600	600	200	0.37	200	150	0.37	7.2	415 /3/ 50	109
FEB1000	1000	200	0.75	333	150	0.75	12	415 /3/ 50	147
FEB1500	1500	250	1.5	500	150	0.75	18	415 /3/ 50	191
FEB2000	2000	250	1.5	667	150	0.75	24	415 /3/ 50	202
FEB3000	3000	250	2.2	1000	150	1.1	31.5	415 /3/ 50	235
FEB4500	4500	320	2.2	1400	249	1.1	42	415 /3/ 50	362

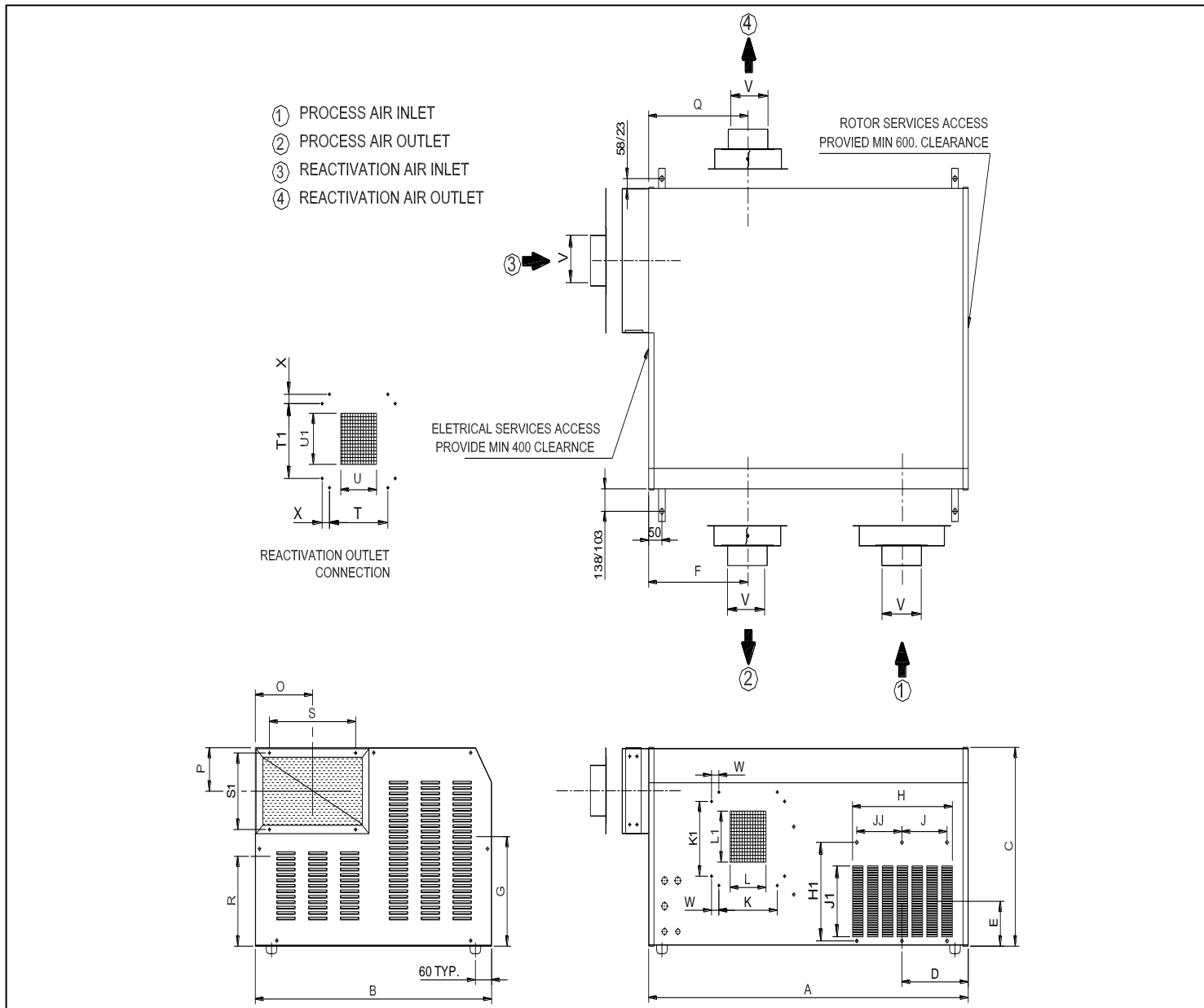
\* Note:- Other voltage available are 200/220/240/380/440/460 VAC, 1Ph/3Ph, 50/60 Hz



ALL DATA SUBJECT TO CHANGE WITHOUT NOTICE



## DIMENSIONAL DATA & DUCT CONNECTION (mm)



- \* Process Inlet size 500 x 210 for FFB-3000 only.
- \* Process Inlet size 528 x 218 for FFB-4500 only.

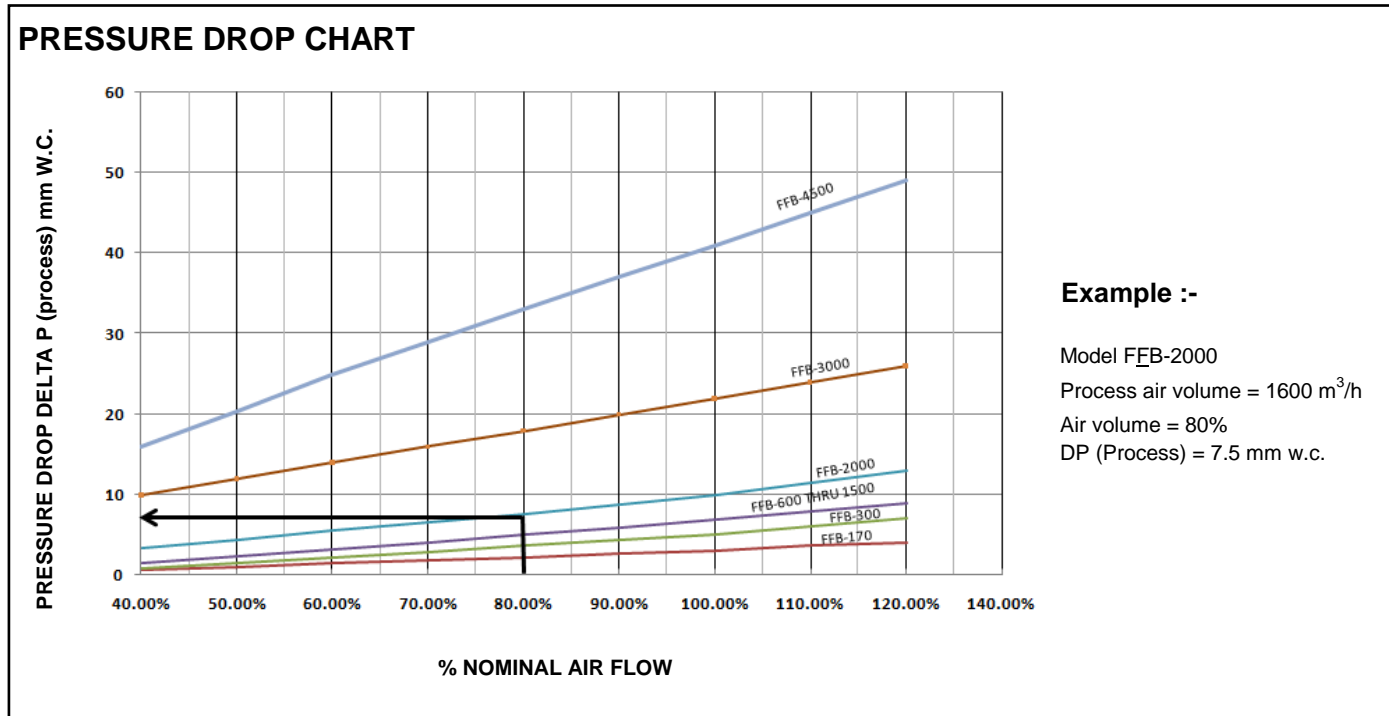
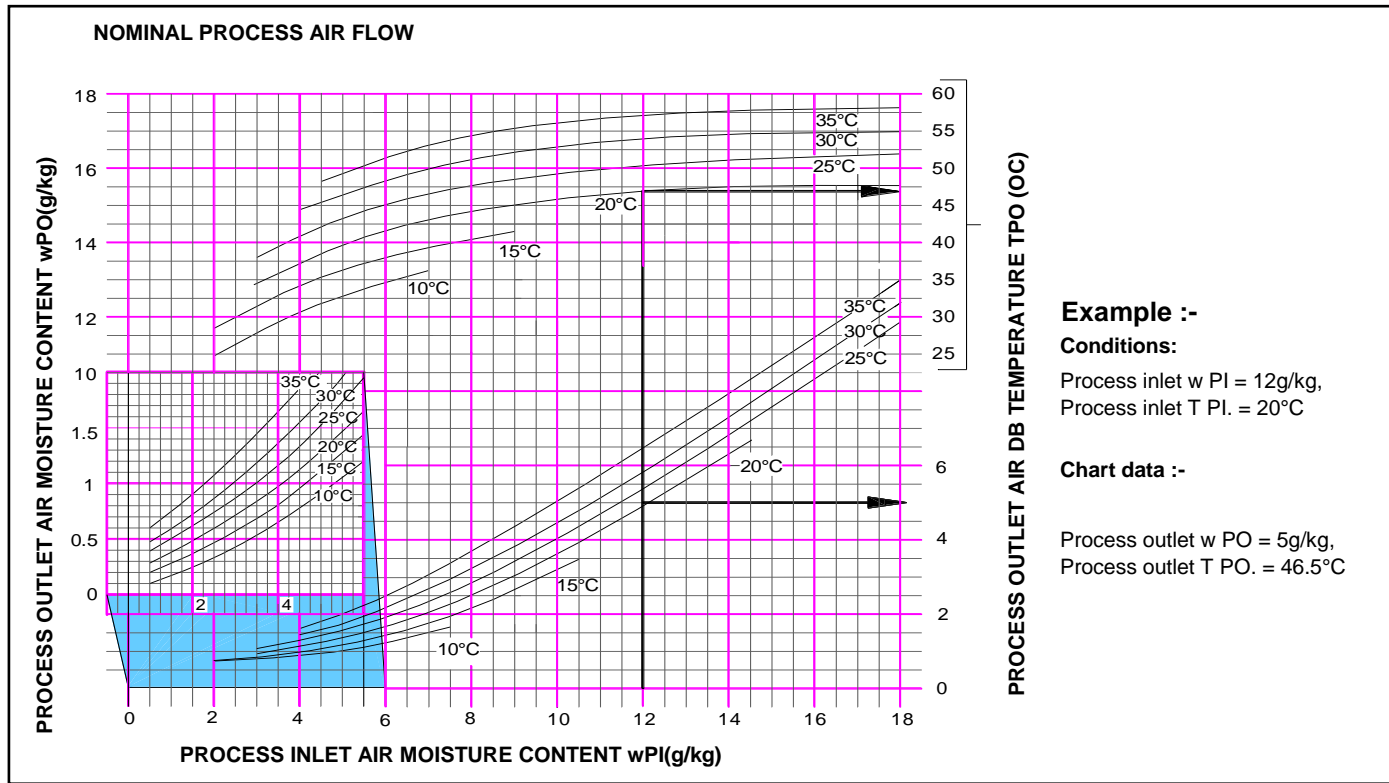
MODEL	UNIT DIMENSION DATA (mm)			PROCESS DUCT CONNECTION (mm)														REACTIVATION DUCT CONNECTION (mm)										DIA. HOSE		
				INLET CONNECTION							OUTLET CONNECTION							INLET CONNECTION					OUTLET CONNECTION							
				A	B	C	D	E	H	H1	J	JJ	J1	F	G	K	K1	L	L1	w	O	P	S	S1	Q	R	T	T1	U	U1
FFB-170	680	480	394	140	110	152	190	112	0	124	224	220	120	175	77	93	0	110	85	118	143	224	178	120	175	77	93	0	96	96
FFB-300	740	540	445	170	110	208	190	170	0	124	237	265	120	175	95	93	0	110	85	118	143	237	170	120	175	95	93	0	96	96
FFB-600	890	630	494	196	136	264	240	226	0	160	300	273	170	225	98	128	0	142	85	182	145	300	220	170	225	98	128	0	146	146
FFB-1000	1048	730	555	225	160	320	290	280	0	208	365	290	220	220	124	150	27.5	180	125	255	225	365	270	220	220	124	150	27.5	196	196
FFB-1500	1208	890	584	254	160	376	290	170	170	200	375	312	220	220	135	150	27.5	212	125	325	225	375	265	220	220	135	150	27.5	196	196
FFB-2000	1208	890	629	250	160	376	290	170	170	200	375	344	220	220	135	163	27.5	212	125	325	225	375	255	220	220	135	150	27.5	196	196
FFB-3000	1208	1000	730	302	160	500	290	230	230	210	390	420	295	295	155	205	27.5	212	125	325	225	375	265	220	220	135	150	27.5	---	196
FFB-4500	1227	1156	830	341	134	578	290	269	269	210	418	477	255	461	155	405	--	218	129	325	225	402	261	220	220	137	150	27.5	---	196

Note : (1) All dimensions in mm.  
 (2) For reference purpose only



# PERFORMANCE CHART

Performance charts are for nominal process airflow within the operating range each FFB series and assumes  $w_{PI} = w_{RI}$ . Please consult Bry-Air for other specific condition.

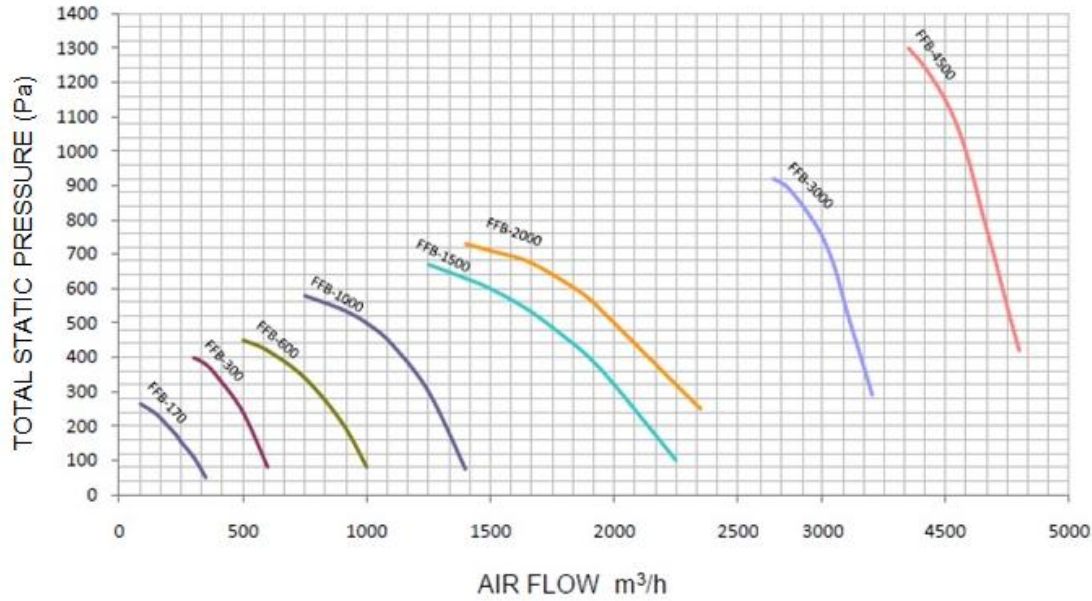


ALL DATA SUBJECT TO CHANGE WITHOUT NOTICE



## FAN PERFORMANCE CHART

The fan performance curve are for inlet conditions at 20°C, density 1.2kg/m<sup>3</sup>



### FEATURE OVERVIEW

Items		Standard	Optional
<b>Rotor :</b>	High performance metal silicate	√	
	High performance metal silicate (High RH)		√
	High performance molecular sieve (Low RH)		√
<b>Process :</b>	High capacity metallic mesh filter	√	
	External box fitted with EU5 / filter		√
	External box fitted with EU7 / filter		√
	Higher static fan		√
<b>Reactivation :</b>	High capacity metallic mesh filter	√	
	External box fitted with EU5 / filter		√
	External box fitted with EU7 / filter		√
	Higher static fan		√
<b>Energy :</b>	Electric reactivation	√	
	External box fitted with steam reactivation		√
<b>Construction :</b>	Cold rolled powder coated steel	√	
	Stainless steel		√
<b>Control :</b>	Single stage On/Off humidstat	√	
	SSR control for reactivation heaters	√*	
	Digital display panel		√
	Microprocessor control	√	
	Touch panel		√

\* STANDARD FOR FFB-4500 ONLY

ALL DATA SUBJECT TO CHANGE WITHOUT NOTICE

