

TECHNICAL SPECIFICATION

TWIN AUTO LOADERS (BVL-T Series)

Bulletin : BAA:BVL(T)-924.5
Effective : JAN. 06, 2017
Supersedes : BAA:BVL(T)-924.4
Dated : SEP. 28, 2016

Cabinet-Style, Floor Mounted Twin Auto Loaders are available in three combinations:

- CNC manufactured with powder coated finish
- Heavy duty regenerative vacuum pump
- Unique silicon & SS flapper design
- Material receiver belly for primary and secondary loading
- Quick removable clamps for material and vacuum hoses
- Micro PLC controller to supervise the operation, faults management along with display messaging of system parameters of twin loader
- Pneumatic actuated cylinder to change the vacuum from primary receiver to secondary
- Service window for easy service of receiver belly in case of JIT Receiver
- CRS receiver & SS as optional
- Flexible, transparent hoses of PVC/ PU material for visibility of conveying material
- Caster wheel mounted cabinet for easy movement
- Cartridge type dust replant high efficiency paper filter
- Adjustable material pick-up tube for air to material ratio
- Audible alarm with message for faults like material shortage & pump tripped
- Password facility to avoid any kind of unauthorized handling
- SS Mesh Filter of 530 microns separates the resin from the air in the receiver belly
- ATM valve helps in avoiding frequent on/off of vacuum pump
- World wide proved Siemens make electrical switchgears



* Compressed Air required for Ratio loading.
** Compressed Air required for VTOB-P

SS Receiver Belly as optional

for safety & reliability

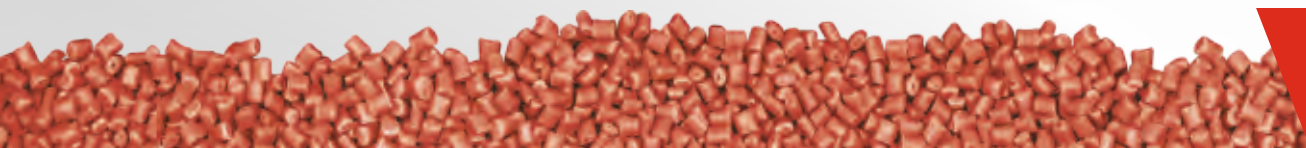
- Option available for pneumatically operated ratio loading & vacuum takeoff box
- Integrated limit-switch activates material demand
- C-Clamp for easy removal of top hood in the receiver belly for easy cleaning

Specifications for BVL (T) Series Twin Auto Loaders

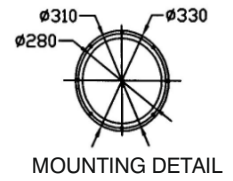
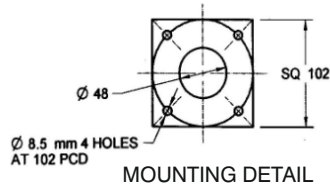
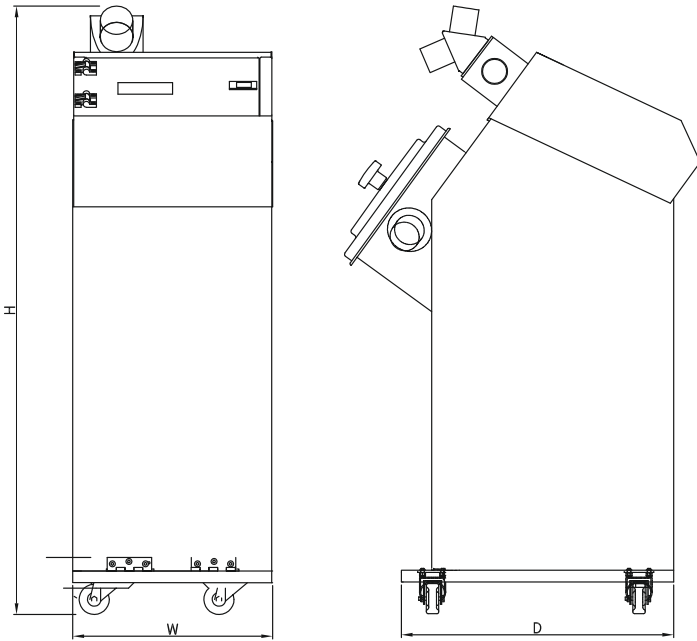
MODEL	CONVEYING LINE SIZE DIA (MM)	VACUUM LINE SIZE DIA (MM)	FILTER TYPE	FULL LOAD AMP. 415/3/50	BLOWER KW	RECEIVER BELLY DIMENSIONS (MM)			TROLLEY DIMENSIONS (MM)			APPROX. SHIPPING WEIGHT (KG.)
						LTR	H	D	W	D	H	
BVL-100 (T)	32	50	CARTRIDGE	2.14	1.30	6	410	200	340	460	955	85
BVL-200 (T)	38	50	CARTRIDGE	3.9	1.75	6	505	314	376	508	1030	105
BVL-300 (T)	38	50	CARTRIDGE	3.9	1.75	15	505	314	376	508	1075	105
BVL-500 (T)	50	50	CARTRIDGE	8.2	4	30	645	314	450	620	1075	130

"Oil & Moisture Free Compressed Air @ 4 to 6 bar is required"

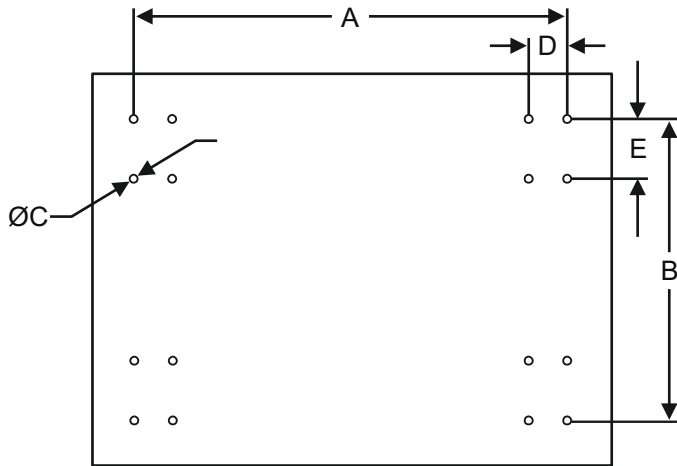
ALL DATA SUBJECT TO CHANGE WITHOUT NOTICE



Dimensional Data



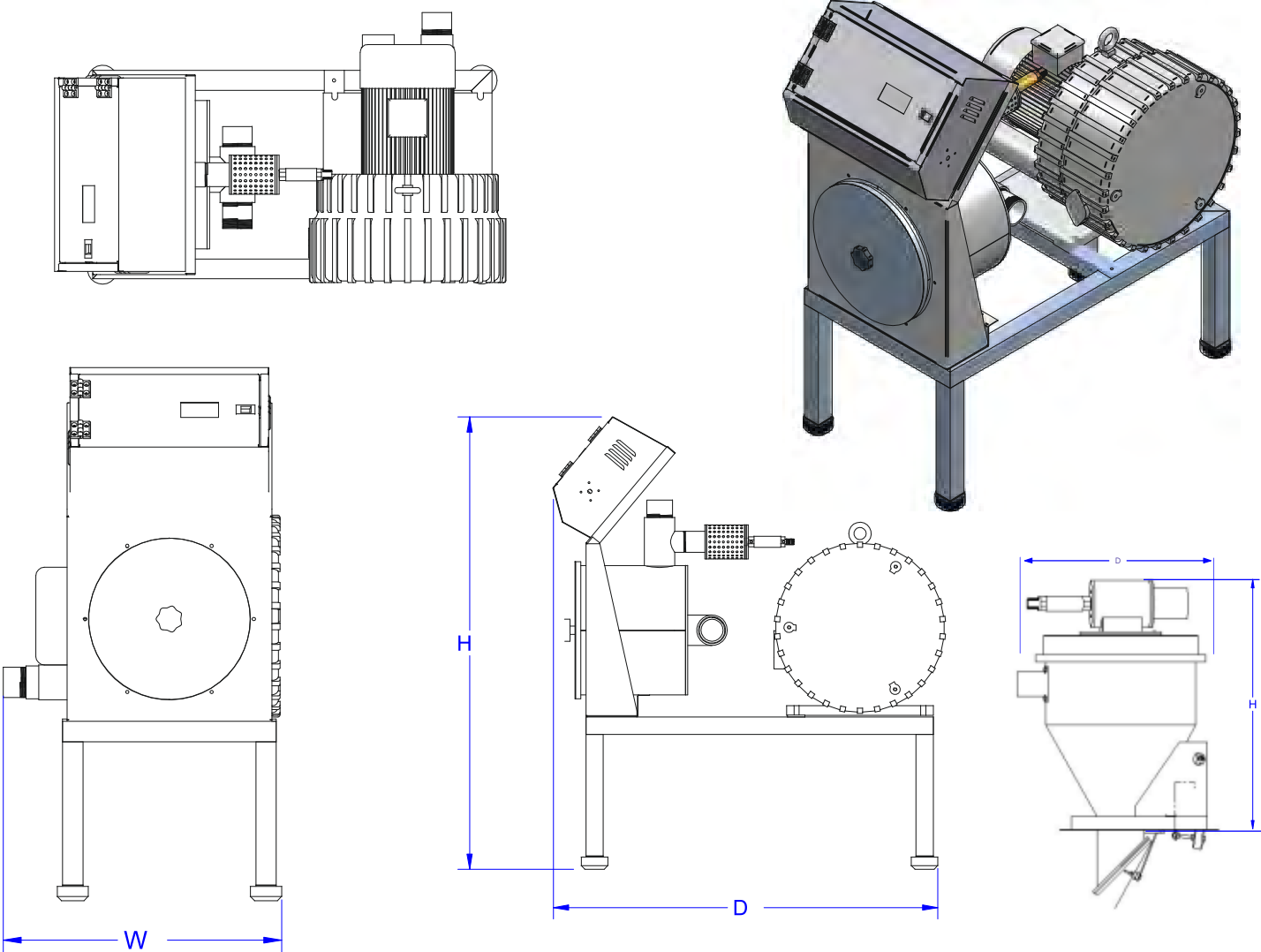
*All Units are in MM



MODEL	A	B	C	D	E
BVL-100/200 (T)	384	266	6.35	34	55
BVL-300 (T)	448	302	6.35	34	55
BVL-500 (T)	540	376	6.35	34	55

All Units are in MM

MODEL	STANDARD ACCESSORY		
	MATERIAL LINE	VACUUM LINE	SUCTION PROBE
BVL-100 (T)	8 Mtr.	8 Mtr.	2 No.
BVL-200 (T)	8 Mtr.	8 Mtr.	2 No.
BVL-300 (T)	10 Mtr.	10 Mtr.	2 No.
BVL-500 (T)	10 Mtr.	10 Mtr.	2 No.
BVL-750 (T)	10 Mtr.	10 Mtr.	2 No.
BVL-1000 (T)	10 Mtr.	10 Mtr.	2 No.



Specifications for BVL (T) Series Twin Auto Loaders

MODEL	CONVEYING LINE SIZE DIA (MM)	VACUUM LINE SIZE DIA (MM)	FILTER TYPE	FULL LOAD AMP. 415/3/50	BLOWER KW	RECEIVER BELLY DIMENSIONS (MM)			TROLLEY DIMENSIONS (MM)			APPROX. SHIPPING WEIGHT (KG.)
						LTR	H	D	W	D	H	
BVL-1000 (T)	50.0	63.5	CARTRIDGE	8.0	4*	30	645	314	680	1130	1270	165
BVL-1500 (T)	50.0	63.5	CARTRIDGE	12.00	5.5*	30	645	314	680	1130	1270	185
BVL-2000 (T)	63.5	63.5	CARTRIDGE	15.60	7.5	30	645	314	680	1130	1270	195

"Oil & Moisture Free Compressed Air @ 4 to 6 bar is required"
 *Double stage impeller high pressure blower

ALL DATA SUBJECT TO CHANGE WITHOUT NOTICE



Working Principle:

Bry-Air Twin Loader ensures that the material is always available at both the Primary and Secondary receivers. These Loaders are designed for conveying of un-dried and dried material at both points. When the power is switched On i.e. when start key is pressed, the vacuum blower starts and the solenoid valve of primary receiver get energized starting the primary loadings. After completion of primary loading, the solenoid valve of secondary receiver get energized and secondary loading starts. At the same time primary receiver belly dumps material into hopper and a signal goes to the controller for next cycle.

After completion of the both cycles, primary as well as secondary, the controller checks at which station material is required. If primary loader doesn't need more material, the controller will switchover the loading to secondary loader and vice-versa. If both station do not require material, after a set delay time vacuum blower stops. Whenever the material is required by any station, the blower starts again and work as per the above sequence.

The three combinations available in twin loader are ;

1. Flapper & Flapper Type Receiver

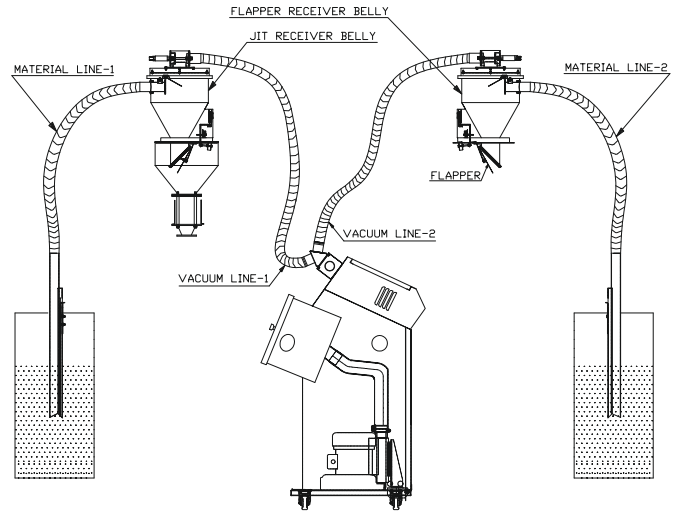
When both the primary as well as secondary receivers are mounted on the Hoppers for conveying of un-dried material to two drying hoppers.

2. Flapper & JIT (just In Time) Type Receiver

When one receiver is mounted on the Hopper for loading of un-dried material and secondary receiver directly on the throat of the machine for conveying of dried material

3. JIT (Just in Time) & JIT (Just in Time) TYPE RECEIVER

When both the primary as well as secondary receivers are mounted directly on the throat of the machine and for conveying dried material.



Options Availability :

DESCRIPTION	AVAILABILITY			
	BVL-100 (T)	BVL-200 (T)	BVL-300 (T)	BVL-500 (T)
MAGNETIC GRILL FOR REMOVAL OF FERROUS IMPURITIES	← AVAILABLE →			
IR SENSOR FOR JIT RECEIVER	← AVAILABLE →			
MATERIAL LINE & VACUUM LINE IN PU OR ALSI PIPE OR SS PIPE	← AVAILABLE →			
VTOB-P FOR DRIED MATERIAL & MASTERBATCH MIXED CONVEYING	← AVAILABLE →			
DAY BIN FOR MATERIAL STORAGE	← AVAILABLE →			
MACHINE HOPPER SS- INSULATED NON- INSULATED	← AVAILABLE →			
PROPORTIONAL VALVE	← AVAILABLE →			

