



BRY-AIR (ASIA) PVT. LTD.

20, Rajpur Road, Delhi 110054
PHONE : 91-11-23906666 FAX: 91-11-23906600
E-MAIL: enquire@pahwa.com, Web site: www.bryair.com

TECHNICAL DATA SHEET

Bulletin : BAA: D0004_11
Effective : June 08,2007
Supercedes : BAA: D0004_10
July 26,2006

COMPACT DEHUMIDIFIER FLUTED FLAT BED - FFB SERIES

FFB WITH HIGH PERFORMANCE, **ECG Dry** METAL SILICATE FLUTED
DESICCANT SYNTHESISED ROTOR

FEATURE HIGHLIGHTS

High efficiency and reliability

- * **CE** Certified as per standard ENISO12100-1:2003, EN ISO12100-2:2003, EN602041:1997
- * A totally self contained unit
- * CNC fabricated unit(s) with powder coated finish
- * Rotor media has high performance metal silicates synthesized in situ.
- * Rotor incorporates robust internal structure with stainless steel perimeter flange for industrial quality, durability and easy serviceability.
- * Rotor perimeter flange extends media and seal life
- * Edge hard face coating on rotor ensures long life and good sealing for media and seals.
- * Rotor is non-flammable with organics < 2%.
- * Process and reactivation air flow sectors are insulated

Necessary control and safeties

- * Differential air pressure switch for providing react air flow.
- * High temperature safety thermostat cutout.
- * Reactivation cool down safety device.
- * Electrical interlocking of fan motors, heaters and rotor drive.
- * Unique PTFE bonded bulb seal design; minimized air leakage

Easy to operate

- * Suitable for continuous operation
- * Auto / manual selector switch.
- * Power on, heater on and fault status indications
- * Independent blower and motor for each airflow (Process & Reactivation)
- * Volume control damper for both (Process & Reactivation) air flow

Easy to install

- * Several mounting and installation options
- * Small footprints; low volume/weight per CMH.

Easy to maintain

- * Quick and easy to service
- * Rotor is water washable

Options

- * Humidity control through humidistat on/off
- * Stainless steel construction

COMPACT DEHUMIDIFIER - FFB... SPECIFICATION

MODEL	PROCESS AIR FLOW CMH	PROCESS ESP (Pa.)	PROCESS MOTOR KW	REACT. AIR FLOW CMH	REACT. ESP (Pa.)	REACT. MOTOR KW	REACT. HEATER KW	POWER * REQD. (v/Ø/Hz.)	APPROX. WEIGHT Kg.
FFB170	170	150	0.1	57	100	0.1	2.3	230 /1/ 50	63
FFB300	300	150	0.1	100	100	0.1	3.6	230 /1/ 50	72
FFB600	600	200	0.37	200	150	0.37	7.2	415 /3/ 50	101
FFB1000	1000	200	0.75	333	150	0.75	12	415 /3/ 50	139
FFB1500	1500	200	1.5	500	150	0.75	18	415 /3/ 50	178
FFB2000	2000	200	1.5	667	150	0.75	24	415 /3/ 50	187

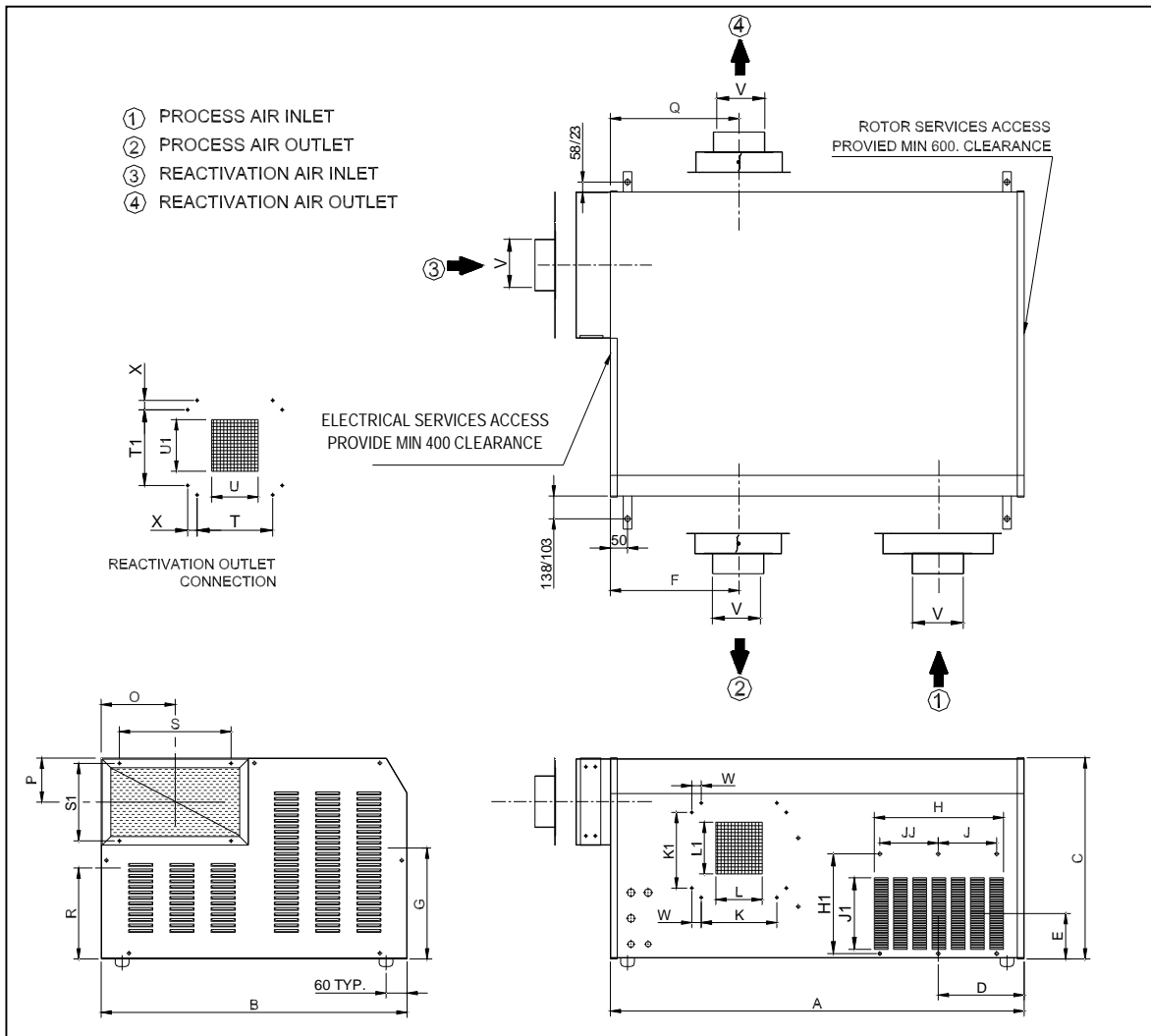
* Note:- Other voltage available are 200/220/240/380/440/460 VAC, 1Ph/3Ph, 50/60 Hz



ALL DATA SUBJECT TO CHANGE WITHOUT NOTICE



DIMENSIONAL DATA & DUCT CONNECTION (mm)



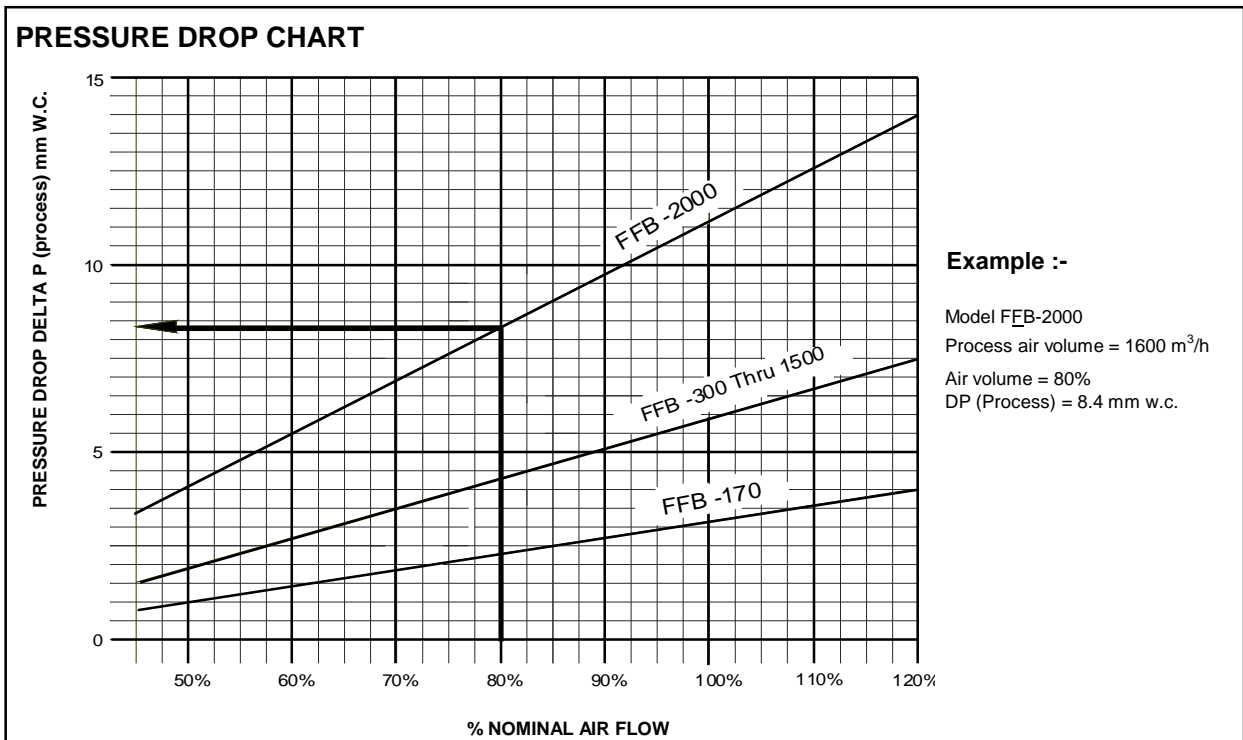
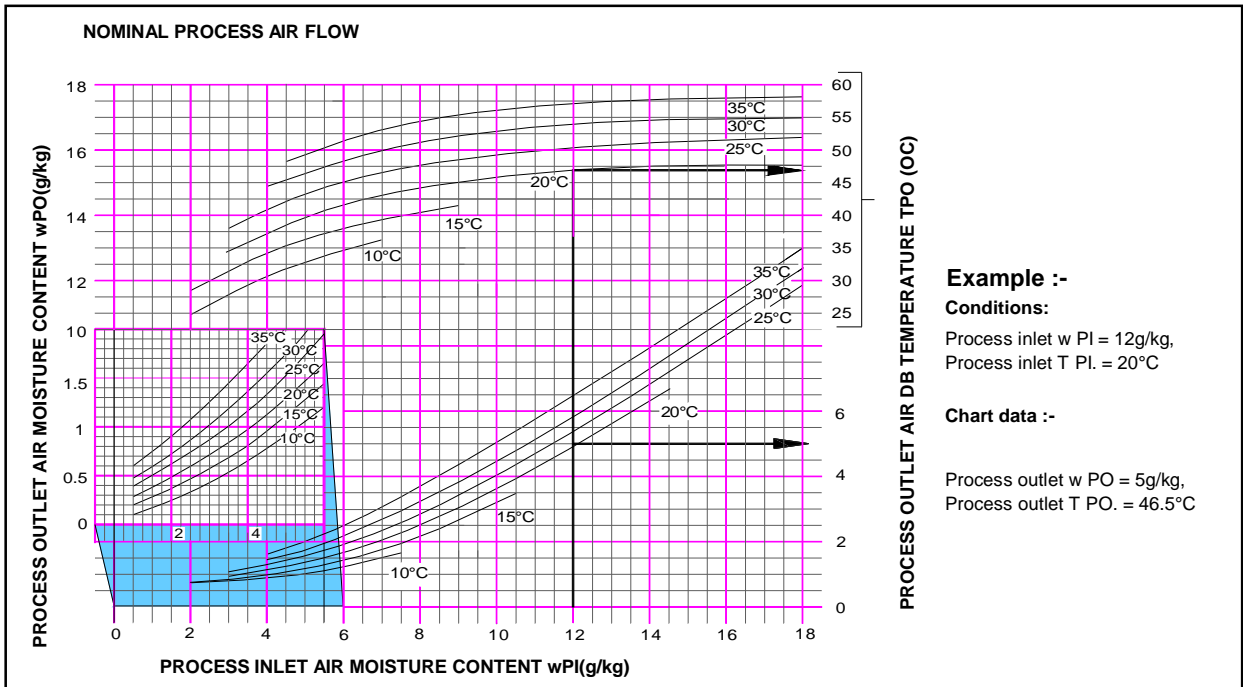
MODEL	UNIT DIMENSION DATA (mm)			PROCESS DUCT CONNECTION (mm)													REACTIVATION DUCT CONNECTION (mm)										DIA. HOSE		
				INLET CONNECTION						OUTLET CONNECTION (mm)							INLET CONNECTION					OUTLET CONNECTION							
				A	B	C	D	E	F	G	H	H1	J	JJ	J1	K	K1	L	L1	w	O	P	Q	R	S	S1		T	T1
FFB-170	676	470	390	146	105	228	225	152	190	112	0	96	120	175	77	93	0	110	85	230	160	118	145	120	175	77	93	0	100
FFB-300	736	540	445	165	115	237	265	208	190	170	0	124	120	175	98	93	0	110	85	237	170	118	145	120	175	98	93	0	100
FFB-600	886	630	494	195	135	300	275	264	240	226	0	160	170	225	98	128	0	142	85	300	218	182	145	170	225	98	128	0	150
FFB-1000	1044	730	555	220	145	365	285	320	290	280	0	208	220	220	124	150	27.5	212	125	365	265	255	225	220	220	124	150	27.5	200
FFB-1500	1204	890	585	250	145	375	308	376	290	170	170	208	220	220	135	150	27.5	212	125	375	265	325	225	220	220	135	150	27.5	200
FFB-2000	1204	880	629	250	145	375	344	376	290	170	170	208	220	220	135	163	27.5	212	125	375	255	325	225	220	220	135	150	27.5	200

Note : All dimensions in mm.

ALL DATA SUBJECT TO CHANGE WITHOUT NOTICE



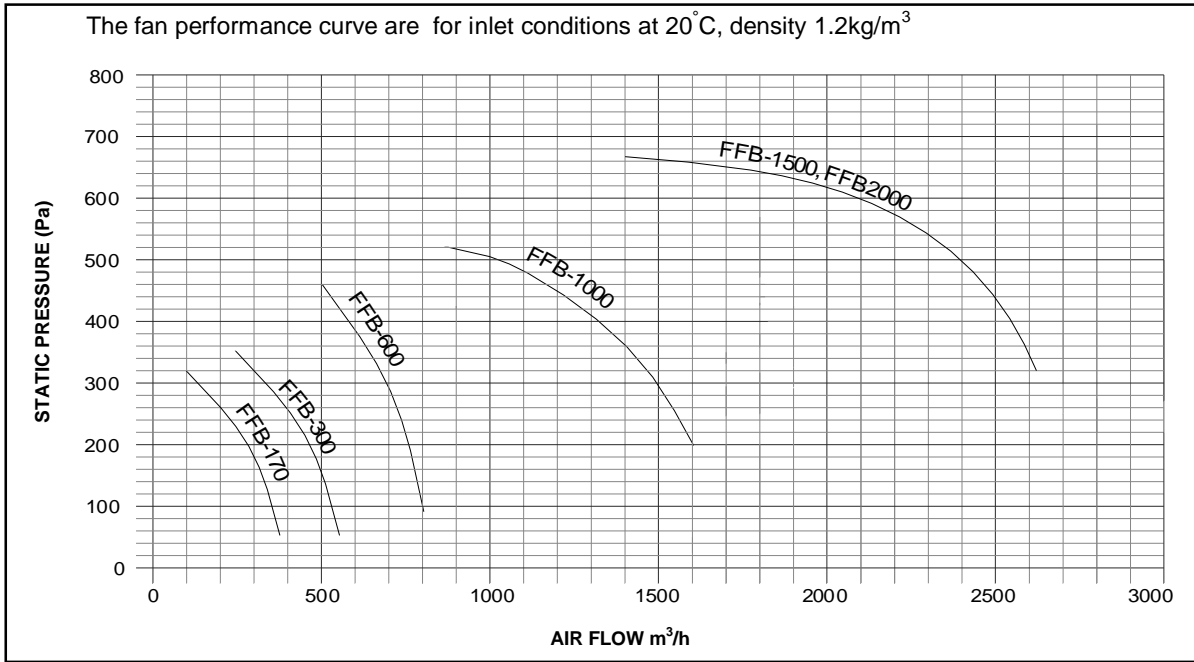
PERFORMANCE CHART



ALL DATA SUBJECT TO CHANGE WITHOUT NOTICE



FAN PERFORMANCE CHART



FEATURE OVERVIEW

	Items	Standard	Optional
Rotor :	High performance metal silicate	√	
	High performance metal silicate (High RH)		√
	High performance molecular sieve (Low RH)		√
Process :	High capacity metallic mesh filter	√	
	External box fitted with EU5 / filter		√
	External box fitted with EU7 / filter		√
	Higher static fan		√
Reactivation :	High capacity metallic mesh filter	√	
	External box fitted with EU5 / filter		√
	External box fitted with EU7 / filter		√
	Higher static fan		√
Energy :	Electric reactivation	√	
	External box fitted with steam reactivation		√
Construction :	Cold rolled powder coated steel	√	
	Stainless steel		√
Control :	Single stage On/Off humidstat		√
	Double stage On/Off humidstat		√
	Proportional humidity sensor with SSR		√
	Digital display panel		√

ALL DATA SUBJECT TO CHANGE WITHOUT NOTICE

